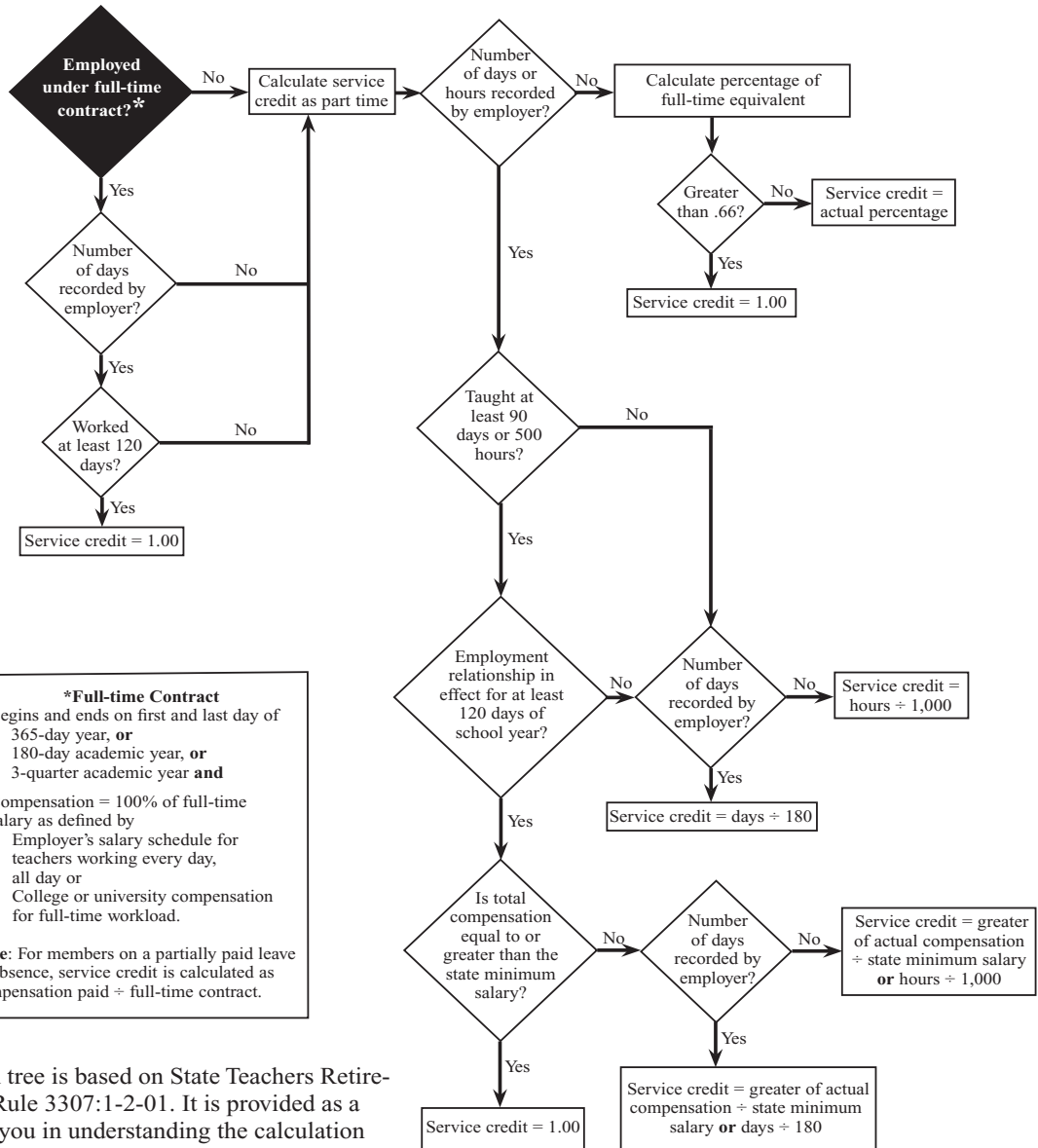


STRS OHIO SERVICE CREDIT DECISION TREE



***Full-time Contract**

1. Begins and ends on first and last day of
 - 365-day year, **or**
 - 180-day academic year, **or**
 - 3-quarter academic year **and**
2. Compensation = 100% of full-time salary as defined by
 - Employer's salary schedule for teachers working every day, all day **or**
 - College or university compensation for full-time workload.

Note: For members on a partially paid leave of absence, service credit is calculated as compensation paid ÷ full-time contract.

This decision tree is based on State Teachers Retirement Board Rule 3307:1-2-01. It is provided as a tool to assist you in understanding the calculation of service credit. It is not intended to be a comprehensive description of the rule.