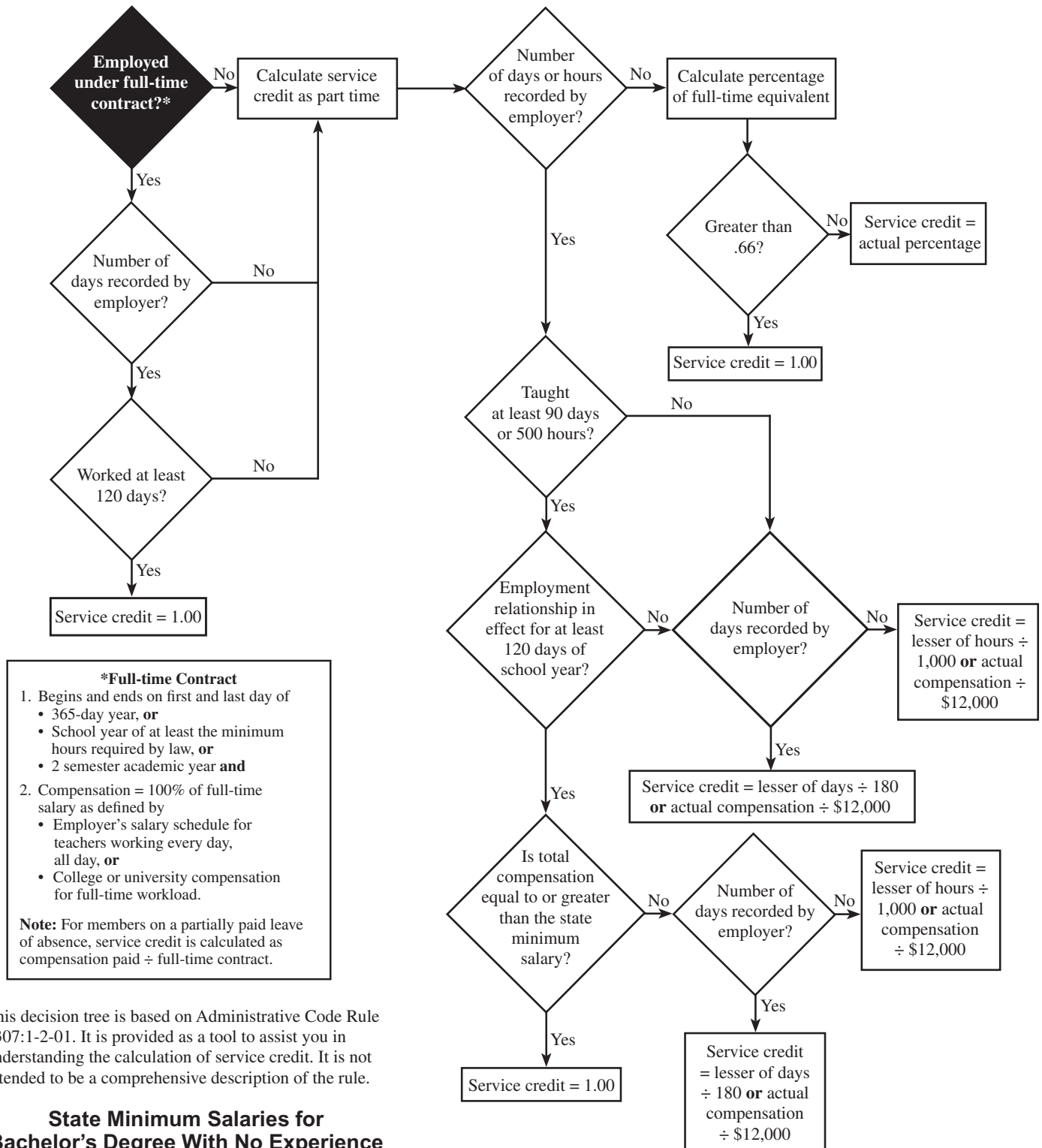




Service Credit Decision Tree (Effective July 1, 2019)



Full-Time vs. Part-Time Service

	Full Time	Part Time
Contract Length	Covers the entire school year.	Covers only a portion of the school year.
Compensation	<p>100% of the full-time salary defined by salary schedule</p> <p>and</p> <p>works at least 120 days.</p>	<p>Does not equal the salary schedule for teacher working every day of the school year</p> <p>or</p> <p>does not meet requirements for full-time employment.</p>

Calculating Part-Time Service Credit (Effective July 1, 2019)

Employment Status	Days Worked	Days in Employment Relationship	Is Salary Greater Than State Minimum?	Service Credit Calculation
Part Time	≥ 90	≥120	Yes	1.00
	≥ 90	≥120	No	Lesser of: Days ÷ 180 or Actual Compensation ÷ \$12,000
	≥ 90	<120	N/A	Lesser of: Days ÷ 180 or Actual Compensation ÷ \$12,000
	<90	N/A	N/A	Lesser of: Days ÷ 180 or Actual Compensation ÷ \$12,000